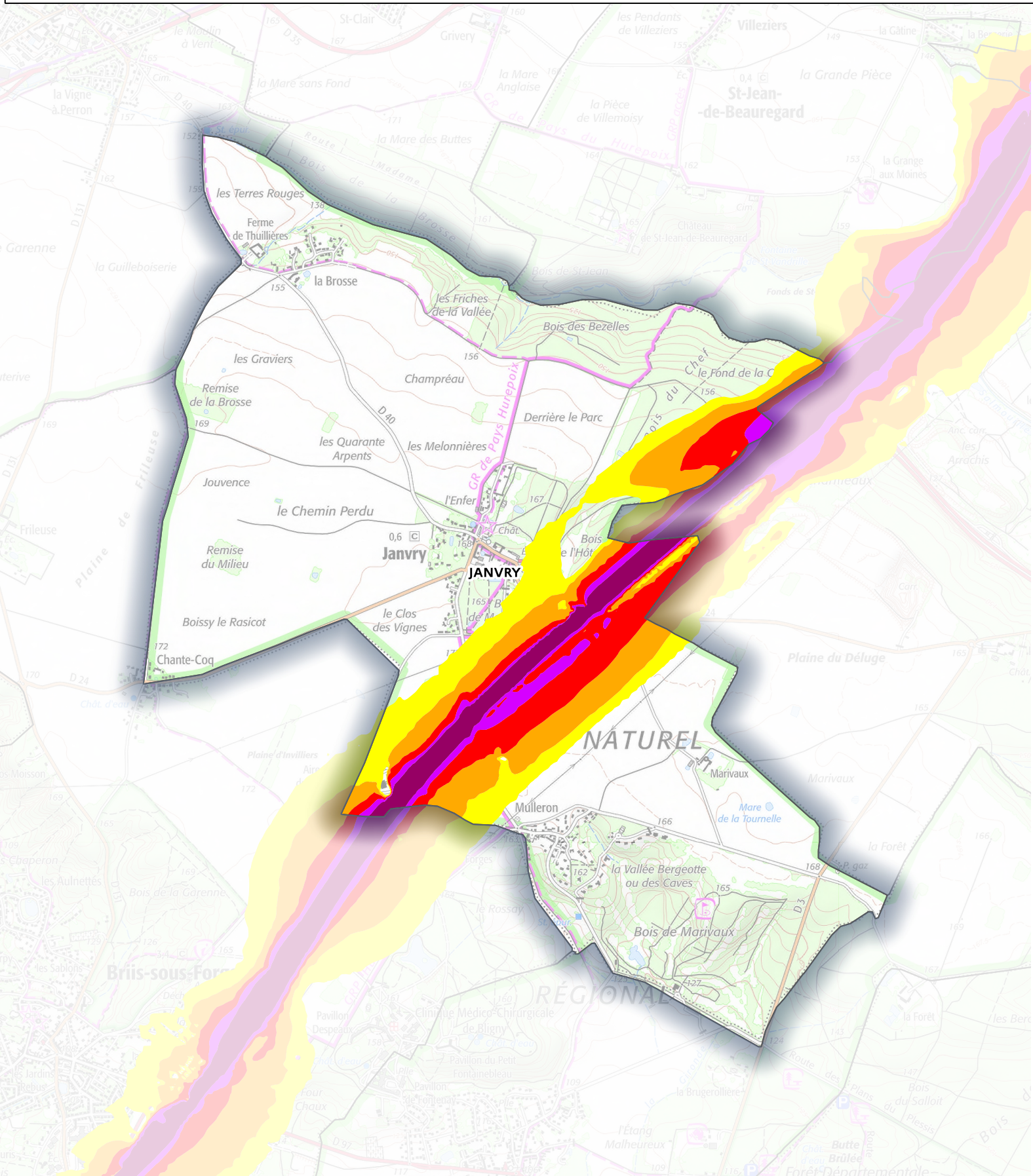


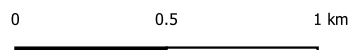
Carte de type A (Lden)

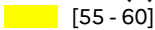
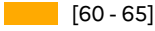
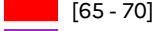
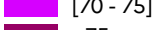
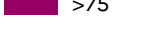
Infrastructures autoroutières concédées dont le trafic est supérieur à 3 millions de véhicules par an

Estimation du bruit sur 24 heures



Réalisé le 24/10/2022
Par : DDT91/STP/BCT/SIG
Source : © IGN BD CARTO/Cofiroute/APRR
Classement : 17_Nuisances
Tous droits de reproduction réservés



Zones exposées au bruit en dB (A)	
	[55 - 60]
	[60 - 65]
	[65 - 70]
	[70 - 75]
	>75