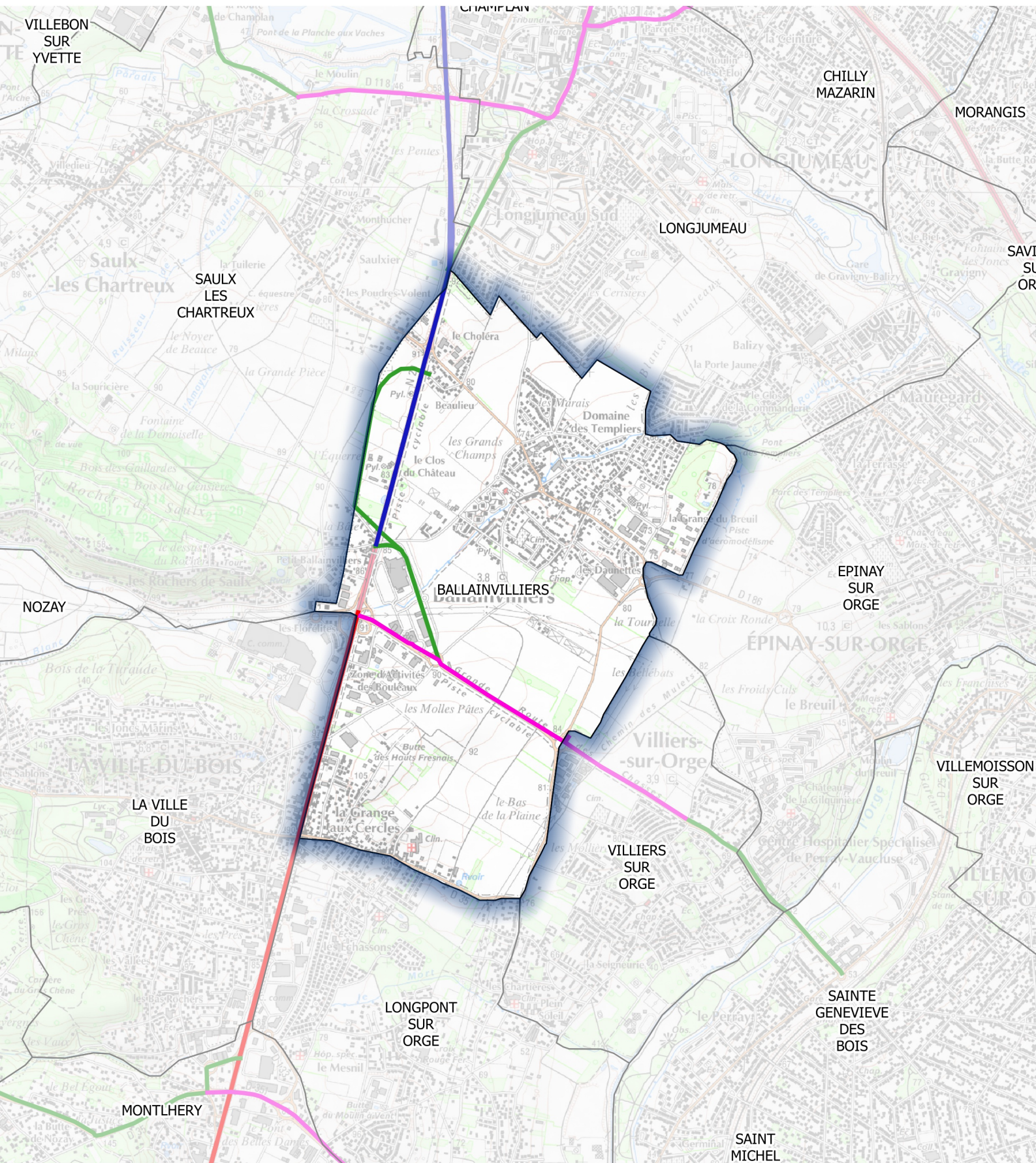
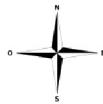







Classement sonore du réseau routier départemental

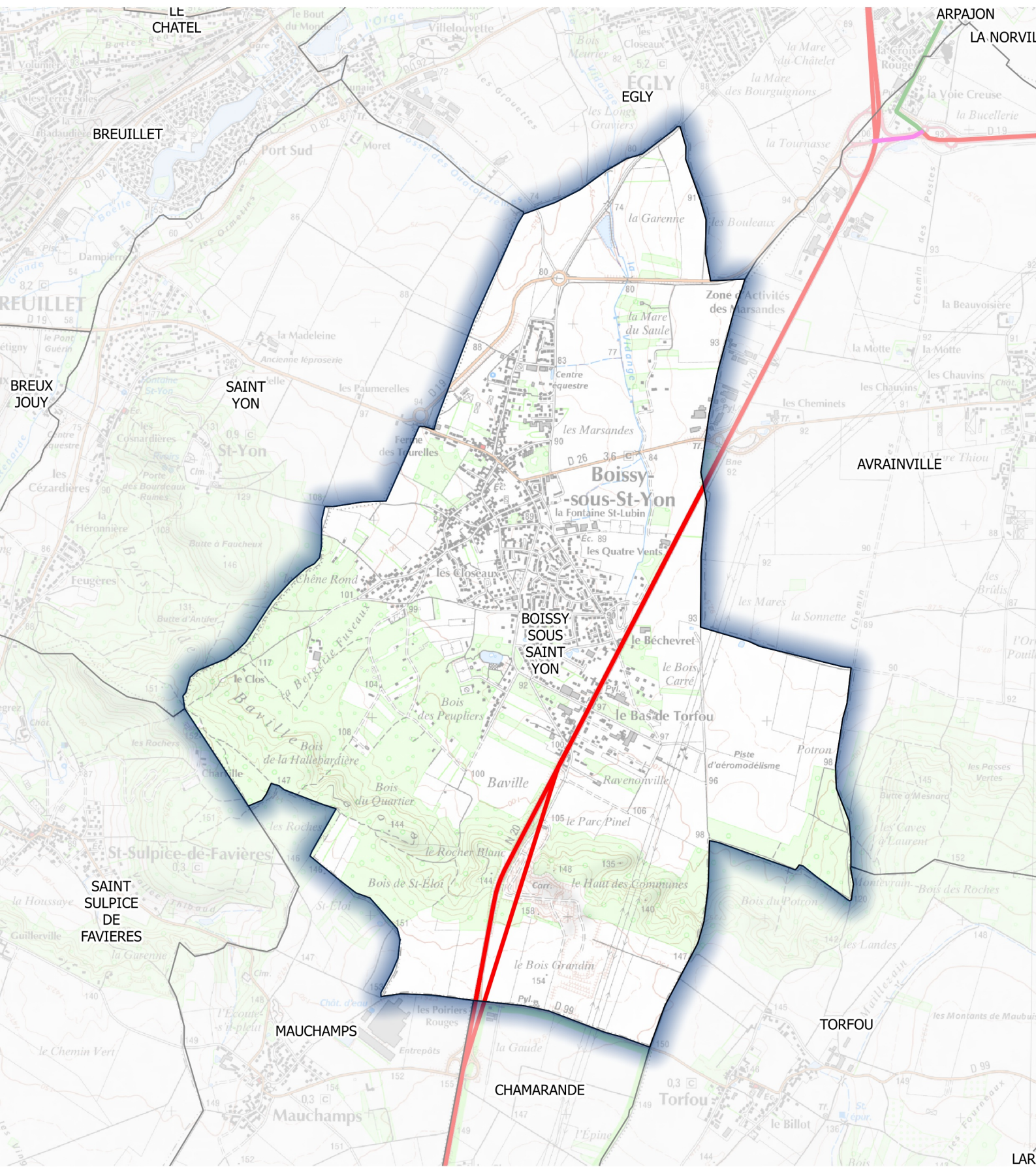
Carte de type B








Catégorie de l'infrastructure	Largeur maximum du secteur affecté par le bruit
	1 (300 m)
	2 (250 m)
	3 (100 m)
	4 (30 m)
	5 (10 m)

Classement sonore du réseau routier départemental

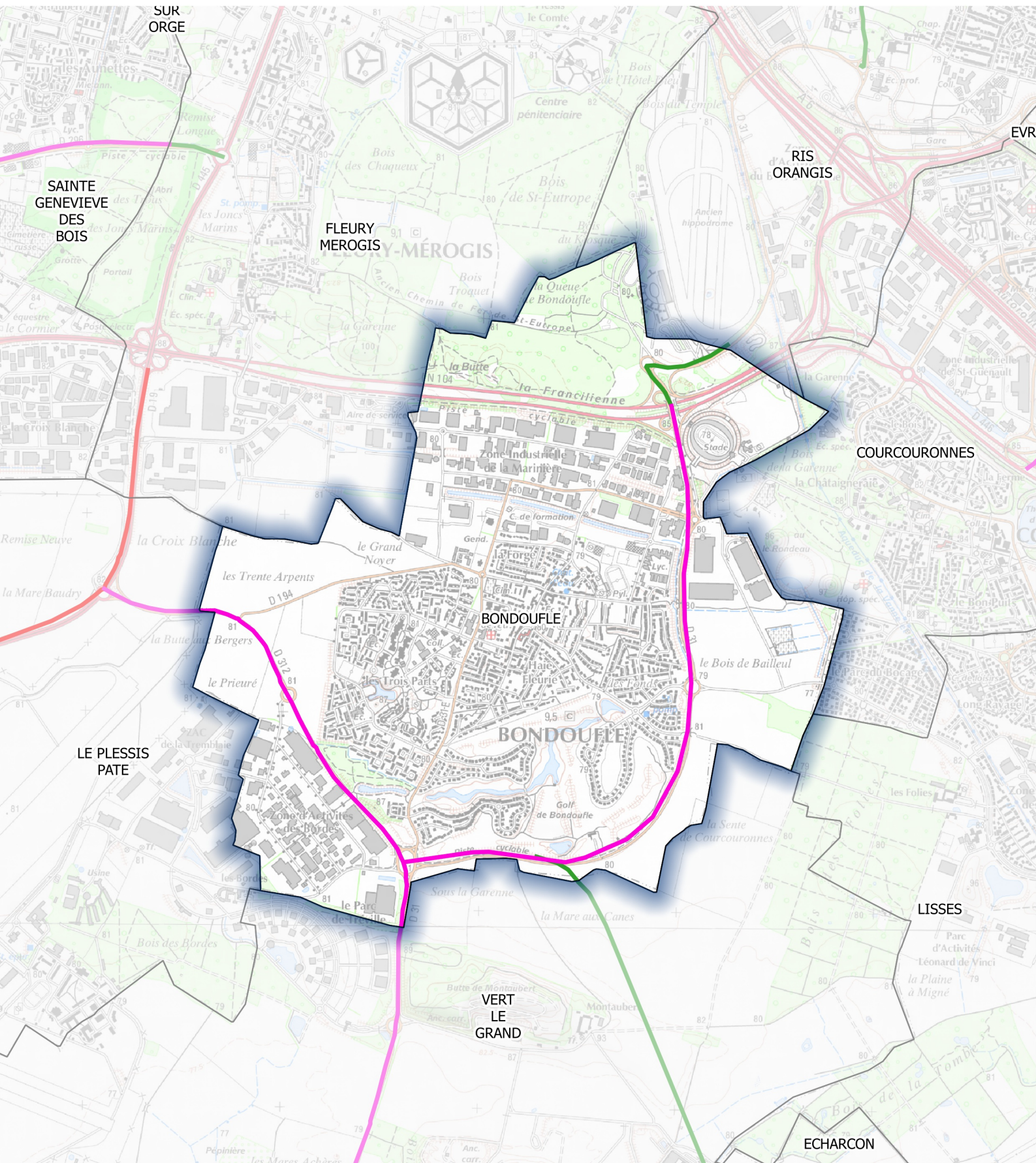
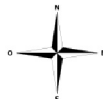
Carte de type B








Catégorie de l'infrastructure	Largeur maximum du secteur affecté par le bruit
	1 (300 m)
	2 (250 m)
	3 (100 m)
	4 (30 m)
	5 (10 m)

Classement sonore du réseau routier départemental

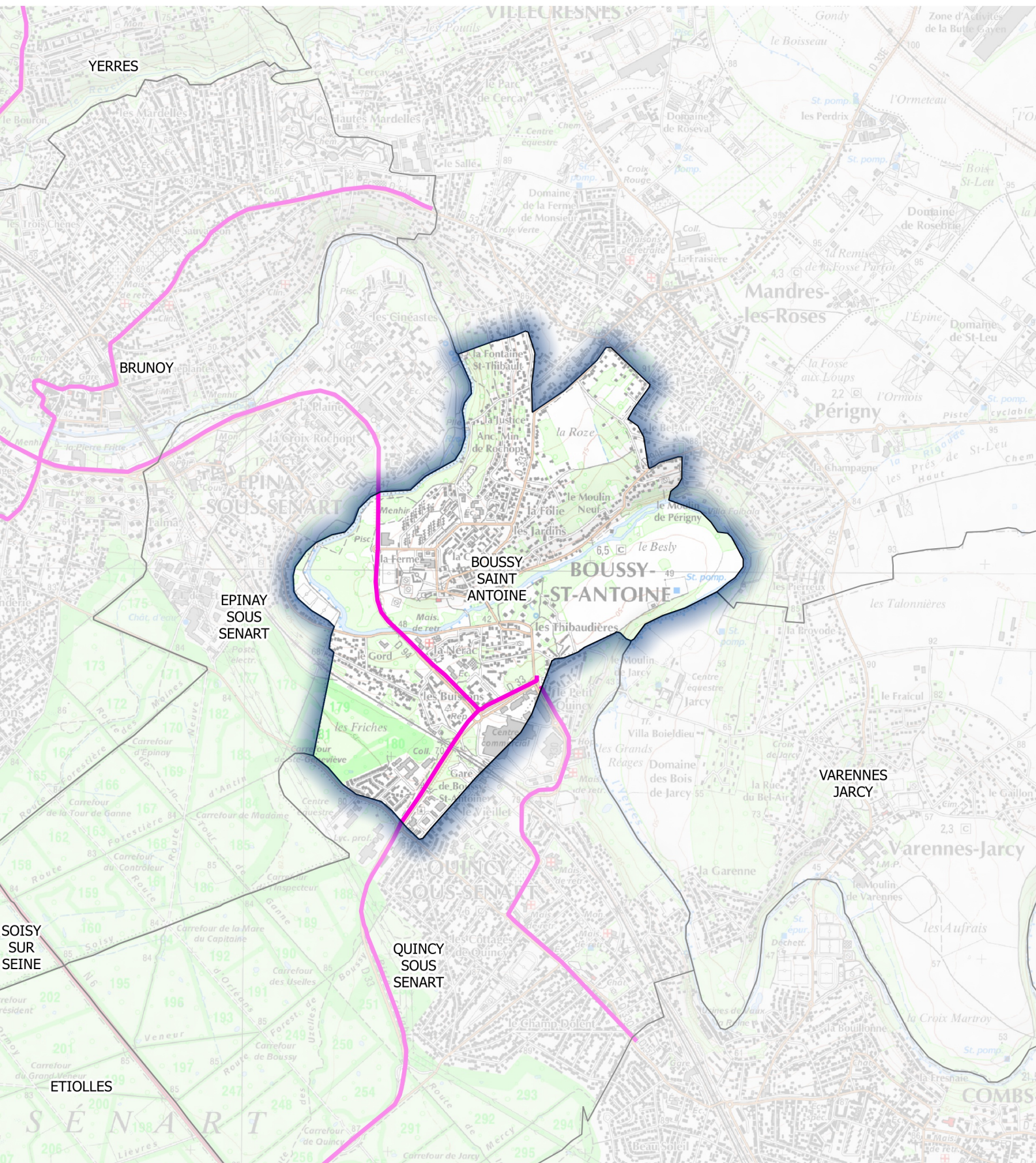
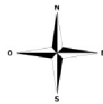
Carte de type B








Catégorie de l'infrastructure	Largeur maximum du secteur affecté par le bruit
	1 (300 m)
	2 (250 m)
	3 (100 m)
	4 (30 m)
	5 (10 m)

Classement sonore du réseau routier départemental

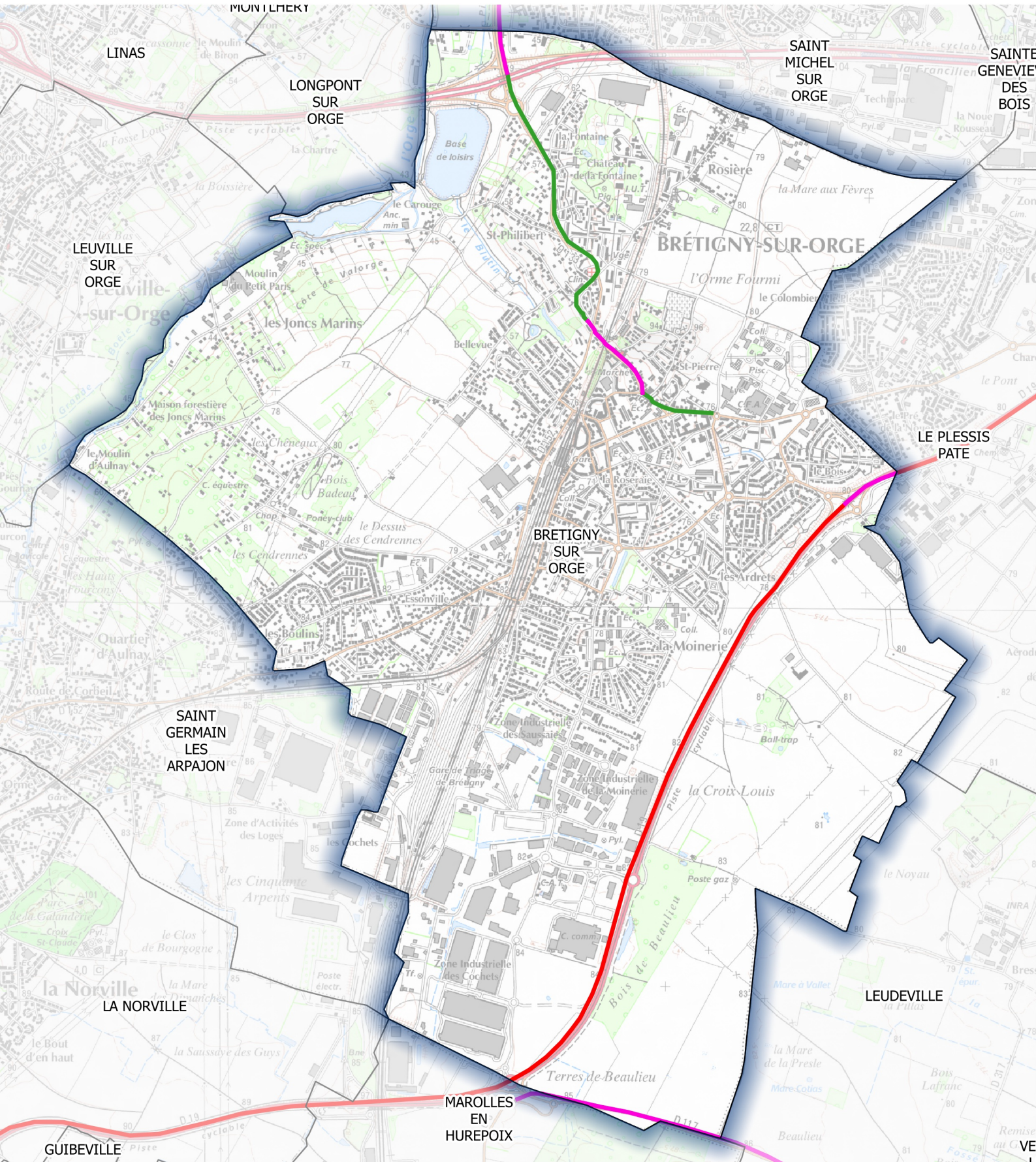
Carte de type B








Catégorie de l'infrastructure	Largeur maximum du secteur affecté par le bruit
	1 (300 m)
	2 (250 m)
	3 (100 m)
	4 (30 m)
	5 (10 m)

Classement sonore du réseau routier départemental

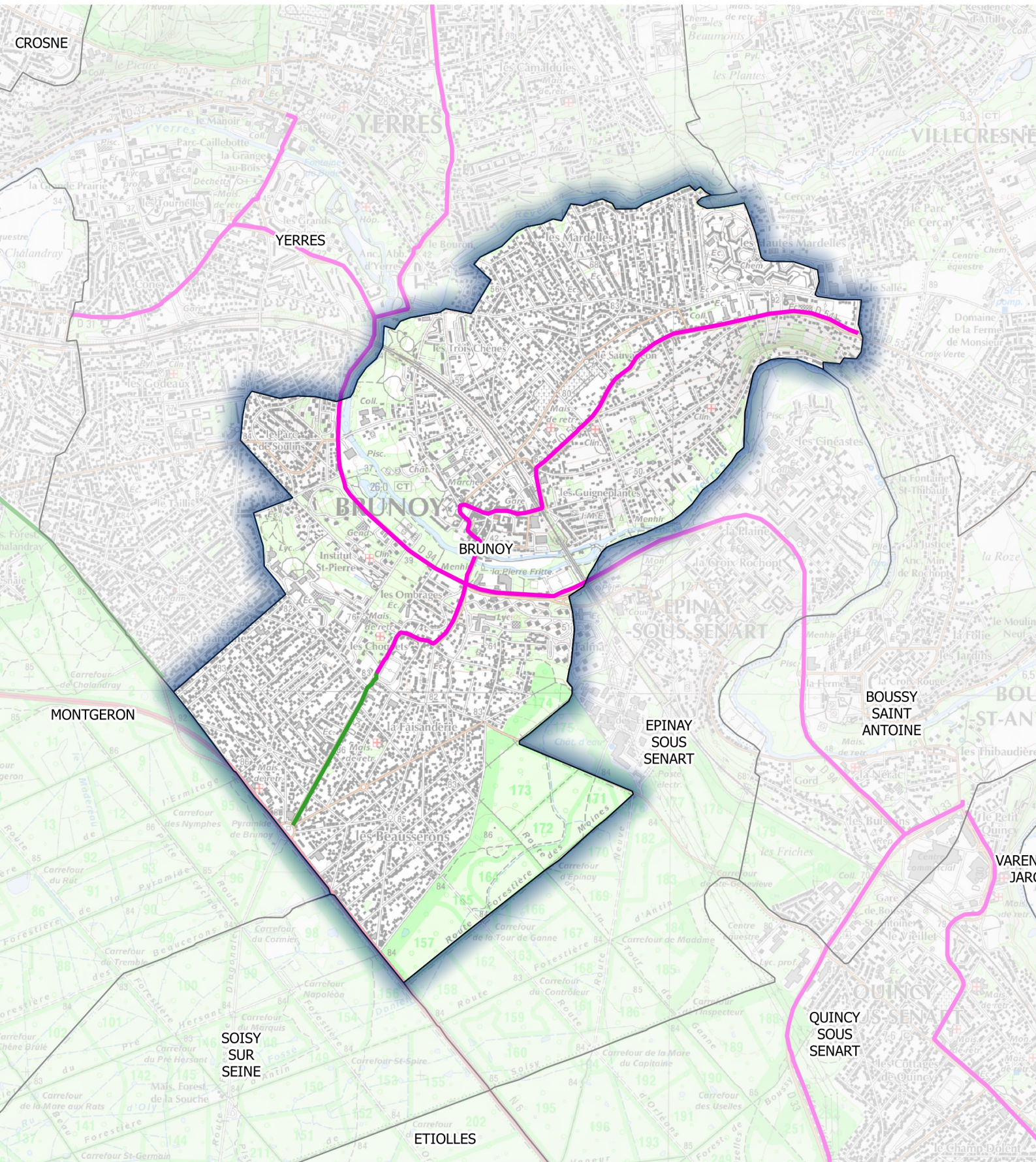
Carte de type B








Catégorie de l'infrastructure	Largeur maximum du secteur affecté par le bruit
	1 (300 m)
	2 (250 m)
	3 (100 m)
	4 (30 m)
	5 (10 m)

Classement sonore du réseau routier départemental

Carte de type B



Catégorie de l'infrastructure	Largeur maximum du secteur affecté par le bruit
	1 (300 m)
	2 (250 m)
	3 (100 m)
	4 (30 m)
	5 (10 m)